

Fig. S8

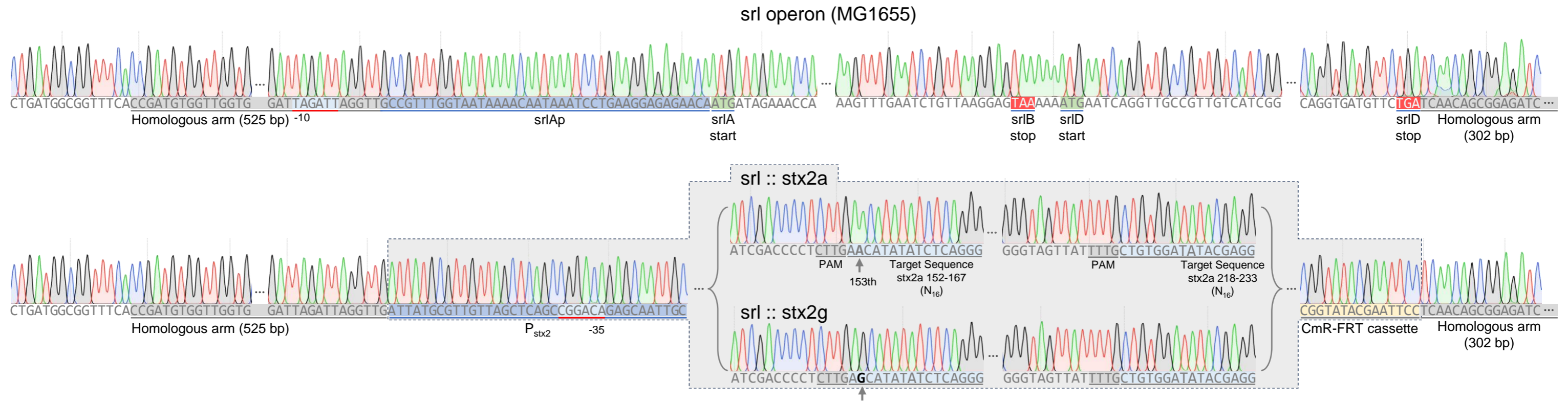


Fig. S8. Sanger sequences of *E. coli* strains carrying different *stx2* gene subtypes.

The Sanger sequence of the *stx2a* and *stx2g* genotypes inserted into the *srl* operon is shown. The gray region indicates parts of the sequences (157–167 and 218–233) of the *stx2a* and *stx2g* genes inserted into the *srl* operon. The gray arrows indicate the nucleotide variations observed in the subtype genes.